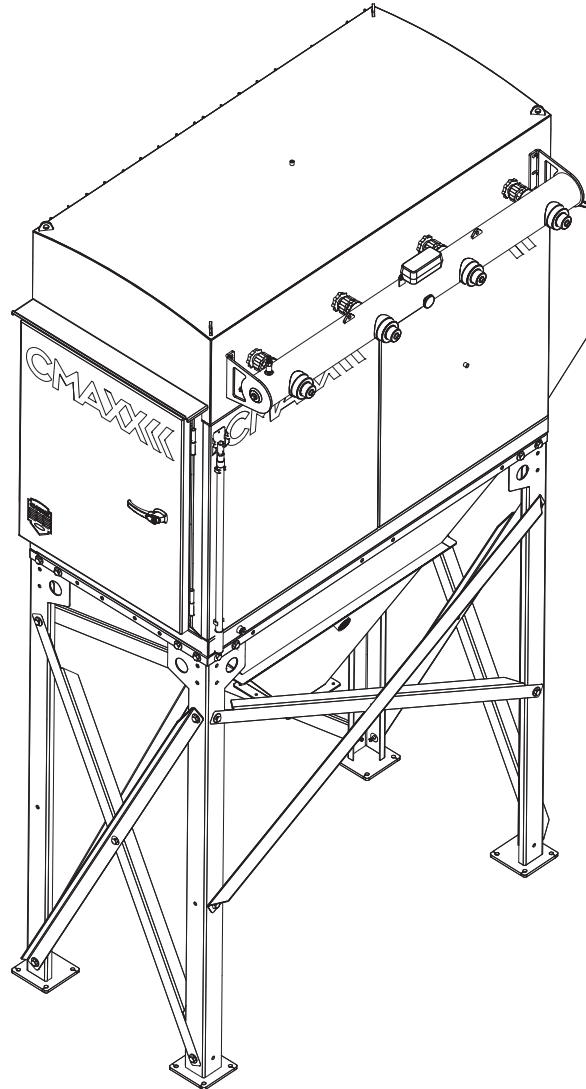




CMAXXXTM



**Installation,
Operation &
Maintenance Manual**

Revision K15

Imperial Systems, Inc.
300 Imperial Drive
Jackson Center, PA 16133
Phone: 724-662-2801
Fax: 724-662-2803
www.isystemsweb.com

CONTENTS

1. INTRODUCTION AND WARRANTY	4
1.1 Introduction	4
1.2 Serial Number	4
1.3 Warranty	5
1.4 IDA In-Line Deflagration Arrester Certification	5
1.5 Fire Protection And Safety Equipment	5
2. SAFETY	6
2.1 Safety Alert Symbol And Signal Words	6
2.2 Operational Hazards	6
2.2.1 PREPARE FOR EMERGENCIES	7
2.2.2 REPLACE SAFETY SIGNS	7
2.3 Maintenance Hazards	7
2.4 Hazards From Modifying Equipment	7
2.5 Pressurized Air Hazards	7
2.6 Safety Warning Label	7
3. SAFETY LABELS	8
4. UNLOADING EQUIPMENT	9
4.1 Suggested Tools and Equipment	9
4.2 Rigging Instructions	9
5. ASSEMBLY AND INSTALLATION	9
5.1 Assembly	9
5.2 Compressed Air Installation	11
5.3 Electrical	12
5.3.1 POWER REQUIREMENTS	12
5.3.2 DCT1000 TERMINAL CONNECTIONS	12
6. DCT1000 CONTROLLER TIMER	13
6.1 Programming Master Controller	13
6.1.1 LAST OUTPUT	13
6.1.2 TIME OFF (SEC)	13
6.1.3 TIME ON (MSEC)	13
6.1.4 HIGH LIMIT (ONLY WITH DCP CONNECTED)	13
6.1.5 LOW LIMIT (ONLY WITH DCP INSTALLED)	14
6.1.6 HIGH ALARM (ONLY WITH DCP INSTALLED)	14
6.1.7 LOW ALARM (ONLY WITH DCP INSTALLED)	14
6.1.8 CYCLE DELAY (MIN)	14
6.1.9 DOWN TIME CYCLES (MIN)	14
6.1.10 AUTO ALARM RESET (SEC) (ONLY WITH DCP INSTALLED)	14

6.2 Maintenance Support and Diagnostics	14
6.3 Pressure Port Location	14
 7. STARTUP	 15
8. MAINTENANCE	16
8.1 Filter Handling And Replacement	16
8.2 Safety Valve Maintenance	16
8.3 CMAXX Spare Parts	17
 9. TROUBLESHOOTING	 19
10. ELECTRICAL	21
10.1 Solenoid Schematic.....	21
10.2 DCT1000 Schematic	22
10.3 Solenoid Heater Schematic (Optional)	23
10.4 Integrated Controls Wiring Diagram	24

1. INTRODUCTION AND WARRANTY

1.1 INTRODUCTION

Congratulations on your purchase of an Imperial Systems, Inc. product. This product has been designed and manufactured to the strictest specifications. It is our utmost desire that you achieve success and are rewarded with years of service from your equipment purchase.

Carefully examine your equipment upon receipt. Report any damage immediately to the freight carrier and register any claim. Should any material or manufacturing defects be discovered, report your findings to our service department along with the model, serial number and date of purchase. We want to make sure that you are satisfied with the equipment. As always, we welcome input on how our products can be improved to serve you better.

Read and understand this manual before using your equipment. Follow all safety instructions. Keep this manual in an accessible at all times.

Information provided in this manual is current as of the issue date. Imperial Systems, Inc. reserves the right to make design changes without further notice or liability.

Equipment modifications from original design and specifications are prohibited. Modifications may compromise safe operation of the machine, subjecting users to serious injury or death and may void any remaining warranty.

This Operator's Manual does not replace, nor does its use release the owner from observing all safety codes and operating limitations, as well as any applicable federal, state, provincial or local regulations.

1.2 SERIAL NUMBER

The serial number plate is located in the lower left corner of the door below the CMAXX sticker.

For future reference, write your serial number in the space below:

BUILT WITH PRIDE IN JACKSON CENTER, PA		
CMAXX		
MODEL	JOB NO.	SERIAL NO.
DATE OF ORDER	CUSTOMER	FILTERS
A.T.C. RATIO	KST VALUE	DUST TYPE
USE ONLY DELTAMAXX FILTERS NON-FACTORY FILTERS VOIDS WARRANTY		
		
WWW.ISYSTEMSWEB.COM 800.918.3013		

Model – Model of dust collector that you have. The number in the model name represents the quantity of filters in the unit.

Job Number – Sales order number that the unit was sold under.

Serial Number – Serial number of the unit.

Date of Order – Date that the job was entered.

Customer – Customer that unit was sold to.

Filters - Part number for filters that were ordered with the unit.

A.T.C. Ratio – Air to cloth ratio that the unit was designed to operate at.

KST Value - KST Value is the explosive value of the dust being collected. The higher the value the more explosive the dust is.

Dust Type – Description of dust that collector was designed to filter.

1.3 WARRANTY

FIFTEEN (15) YEAR CMAXX WARRANTY

Imperial Systems, Inc. warrants the CMAXX product line under its fifteen (15) year limited warranty. This warranty covers all components of the CMAXX product line designed and manufactured by Imperial Systems, Inc., including the housing and workmanship. Should the housing, components manufactured by Imperial Systems, Inc. or Imperial Systems, Inc.'s workmanship be found to be defective, the defective item will be repaired or replaced by Imperial Systems, Inc. without charge. Further, all motors, valves, electrical controls and other items that are sold with the equipment not manufactured by Imperial Systems, Inc. will be covered by the original manufacturer's warranty. This warranty does not cover, paint, corrosion, filters, fans, paint or excessive wear and tear.

1.4 IDA IN-LINE DEFLAGRATION ARRESTER CERTIFICATION

The IDA certification is optional. Contact Imperial Systems to verify if your CMAXX is equipped with the IDA certification.

The CMAXX using the Proprietary DELTAMAXX IDA Filters is proven to completely isolate flame transmission and stop combustion from passing through the filters.

With IDA you can safely return air back into the workplace

This flame and deflagration isolation meets at least one of the required methods required by NFPA. Third party test results are available upon request.

To maintain IDA certification on collector, you must:

- Provide a dust sample for KST testing or provide a copy of a completed KST test.
- Dust cannot exceed a rating of 200 KST.
- Use Certified DELTAMAX IDA Filters.
- Differential pressure cannot exceed 5 Inches of Water Column.
- Install a broken bag detector in return air duct.
- Install a burst indicator on pressure relief panel.

WARNING

Prevent serious injury or death.

Not following above requirements will void IDA rating and could result in property damage, death, or serious injury.

In the event of a deflagration the following must be performed before the unit is returned to service.

1. Inspect unit for any deformation, or stress cracks.
2. Inspect tube sheet to verify there is no deforming, and filters will seal against it properly.
3. Inspect door hardware for proper function, verify there is no deformation or stress cracks in latch mechanism.
4. Inspect lift rails for proper function.
5. Replace filters with Certified DELTAMAXX IDA Filters. Filters can only be purchased from Imperial Systems.
6. Replace pressure relief panel and burst indicator.
7. Replace door gasket.
8. Replace explosion vent braces.

Imperial Systems does offer an inspection service to verify your collector is operational. Please contact your sales representative for current pricing.

1.5 FIRE PROTECTION AND SAFETY EQUIPMENT

The customer assumes the responsibility to contact their insurance company and or AHJ (Authority having Jurisdiction) to see what is required to meet the needs of fire protection, explosion ventilation, deflagration, isolation and any other related equipment.

It is the customer's responsibilities to relay this information to Imperial Systems so that we can properly select and size the necessary equipment to meet their requirements.

The customer should adhere to any and all NFPA, OSHA, federal, state, codes, rules and regulations.

2. SAFETY

2.1 SAFETY ALERT SYMBOL AND SIGNAL WORDS

You must read, understand and follow the instructions given by the operating unit manufacturers, as well as the instructions in this manual.

The safety information in this manual is denoted by the safety alert symbol:



This symbol means ATTENTION! BECOME ALERT! YOUR SAFETY IS INVOLVED!

The level of risk is indicated by the following signal words:



DANGER

DANGER - Indicates a hazardous situation, which, if not avoided, **WILL** result in death or serious injury.



WARNING

WARNING - Indicates a hazardous situation, which, if not avoided, could result in death or serious injury.



CAUTION

CAUTION - Indicates a hazardous situation, which, if not avoided, could result in minor or moderate injury.

NOTICE

NOTICE - Indicates a situation that could result in damage to the equipment or other property.

2.2 OPERATIONAL HAZARDS



WARNING

Prevent serious injury or death.

Read and understand this manual before operating equipment.



WARNING

Prevent serious injury or death from moving parts.

Moving parts can crush and dismember.

Do not operate without guards and shields in place.

Disconnect and lockout power source before adjusting or servicing.

Carefully read all safety messages in this manual and on equipment safety signs. Keep safety signs in good condition and replace missing or damaged safety signs.

New equipment components and repair parts must include the current safety decal.

Learn how to properly operate equipment. NEVER operate or work around this equipment without proper instruction, while fatigued or under the influence of alcohol, prescription or non-prescription medication or if feeling ill.

Keep your equipment in proper working condition.

Know the regulations and laws that apply to you and your industry. This manual is not to replace any regulations or laws. Additional information may be found at: www.nfpa.org or www.osha.gov.

If you do not understand any part of this manual, contact Imperial Systems, Inc. at 724-662-2801.

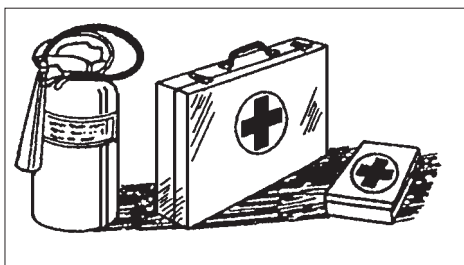
2.2.1 PREPARE FOR EMERGENCIES

Be prepared in case of emergencies.

Keep a fire extinguisher and first aid kit close to the machine.

Keep emergency phone numbers close to your phone.

Know your address so emergency services can locate you if an emergency arises.



2.2.2 REPLACE SAFETY SIGNS

Replace missing or damaged safety signs.

Safety sign locations are identified in Section 3 of this manual.

Replacement safety signs are available from Imperial Systems, Inc.

2.3 MAINTENANCE HAZARDS

Before servicing, disconnect and lockout power source. Read and understand this manual. If you do not understand any part of the manual, contact Imperial Systems, Inc. at 724-662-2801.

Always wear face and/or eye protection, safety shoes, and other protective equipment appropriate for the job.

Do not make unauthorized modifications. Contact Imperial Systems, Inc. at 724-662-2801 before you weld, cut/drill holes, or make any other modifications.

Always use Imperial Systems, Inc. replacement parts.

! WARNING

Before performing inspections, service or maintenance:

- **Disconnect and lockout power source.**

! WARNING

Keep clear of moving components. Moving parts can crush and cut.

Follow lockout procedure before servicing.

! WARNING

Entanglement hazard.

Keep clear of moving components.

Wear proper protective equipment appropriate for the job.

2.4 HAZARDS FROM MODIFYING EQUIPMENT

Do not make any alterations to your equipment. Altering may cause your equipment to be unsafe and may void the manufacturers' warranty.

2.5 PRESSURIZED AIR HAZARDS

Compressed air can cause serious injury or death.

! WARNING

Do not use compressed air for any other purpose than that for which it is provided.

Never direct a stream of compressed air towards your body or the body of another person.

Before using, check all components for damage or wear. Make sure connections are tight and hoses are in good condition.

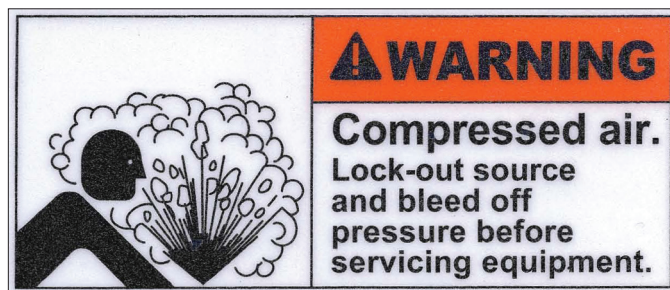
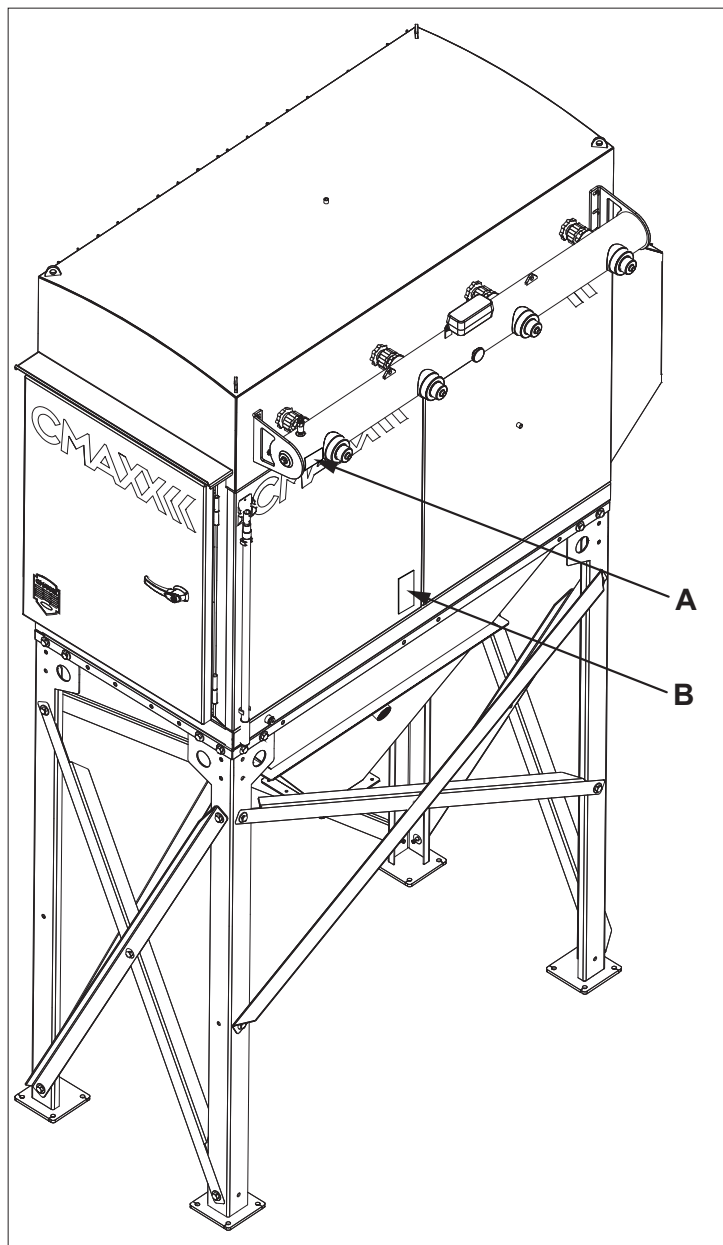
2.6 SAFETY WARNING LABEL

! WARNING

To protect you and others against death or serious injury, all labels shown must be on machine and must be legible.

If any of these labels are missing or cannot be read, contact Imperial Systems, Inc. for replacement labels.

3. SAFETY LABELS



A



B

4. UNLOADING EQUIPMENT

4.1 SUGGESTED TOOLS AND EQUIPMENT

- Screw Pin Clevis
- Crane or Forklift
- Drift Pins
- Drill and Drill Bits
- Wrenches
- Large Crescent Wrench
- Lifting Slings and Chains
- Pipe Sealant
- Pipe Wrenches
- Screwdrivers
- Socket Wrenches
- Spreader Bar
- Impact Wrench
- Impact Sockets

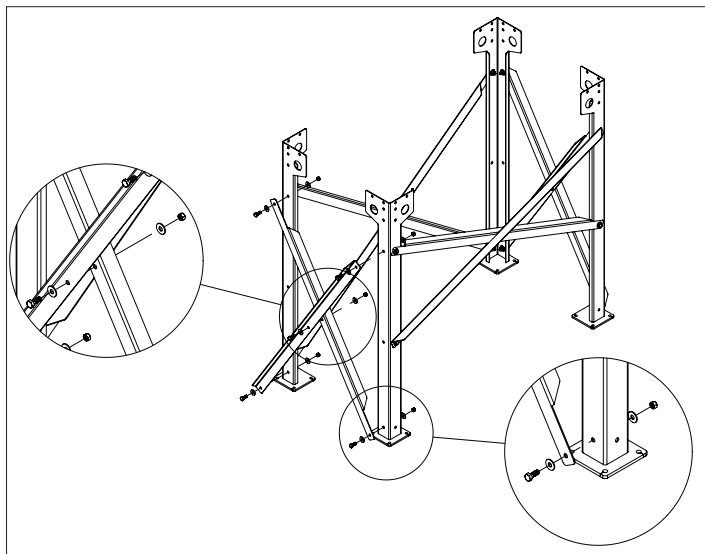
4.2 RIGGING INSTRUCTIONS

1. Use all lifting points provided on the unit.
2. Use screw pin clevises, not hooks on lifting slings.
3. Use spreader bars to prevent damage to the unit's frame.
4. Refer to certified drawings for the weight and dimensions of the unit, subassemblies, and accessories to ensure adequate crane capacity.
5. Only qualified personnel should be allowed to lift or rig the equipment.
6. Refer to applicable OSHA regulations and local codes when using cranes, forklifts, and other lifting equipment.
7. Lift the unit and accessories separately, and assemble after the unit is in place.
8. Use drift pins to align holes during assembly.

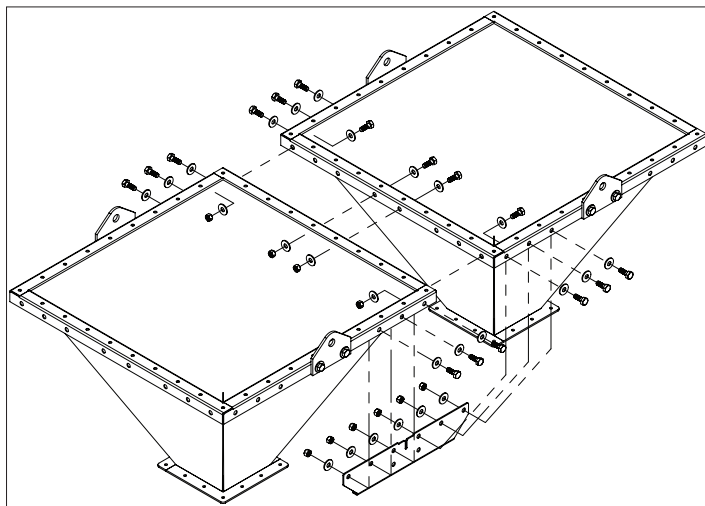
5. ASSEMBLY AND INSTALLATION

5.1 ASSEMBLY

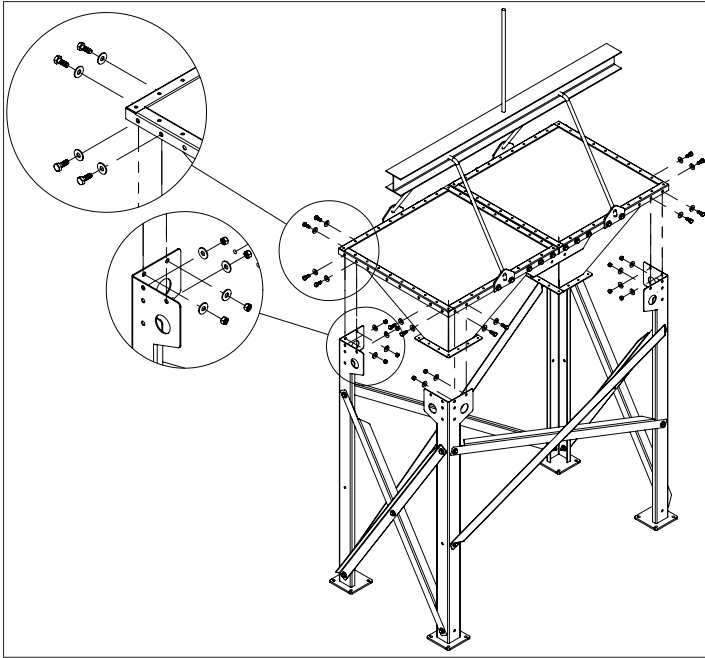
1. Locate and assemble the legs, and cross braces for the collector according to the assembly drawing that came with your collector. **Leave all hardware loose at this time.**



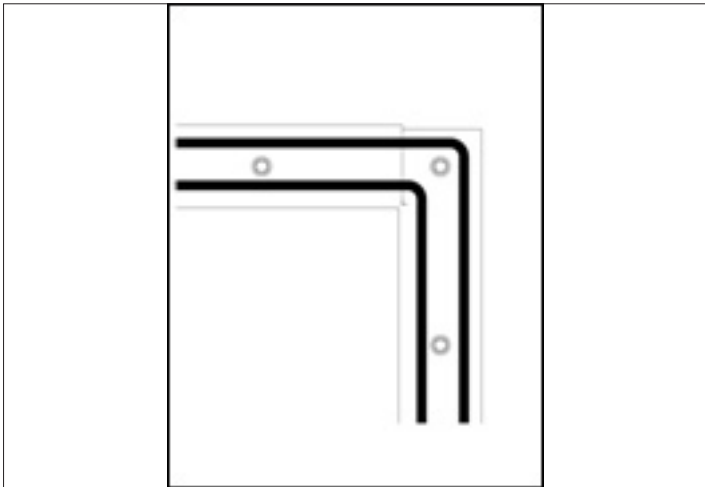
2. If equipped with multiple hoppers, bolt the hoppers together using supplied hardware and gusset brackets.



3. Bolt on the temporary lifting lugs to the hoppers to assist in lifting the hoppers onto the structure. Lift hoppers onto support structure and fasten to the structure using the supplied hardware. Use alignment pins as necessary to align holes. **Leave all hardware loose at this time.**

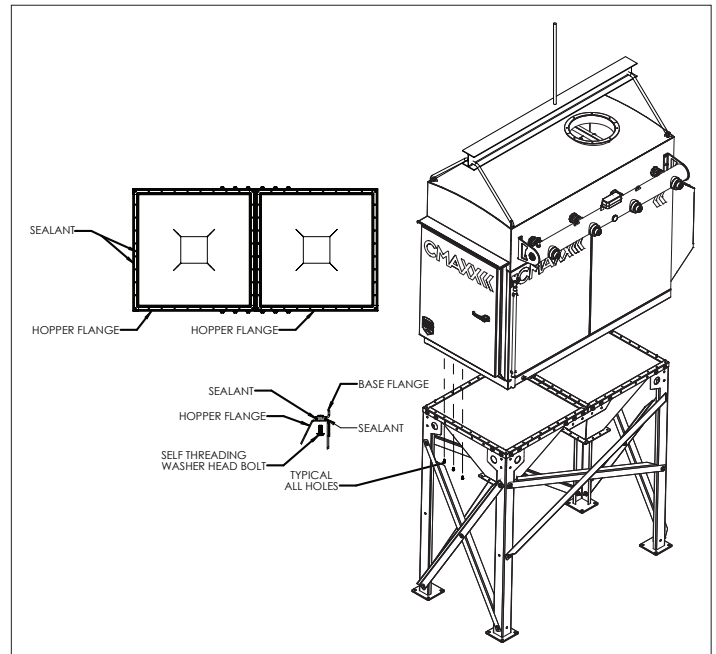


4. Remove the temporary lifting lugs, and apply 2 rows of sealant on the hopper flange. (See following graphic.)

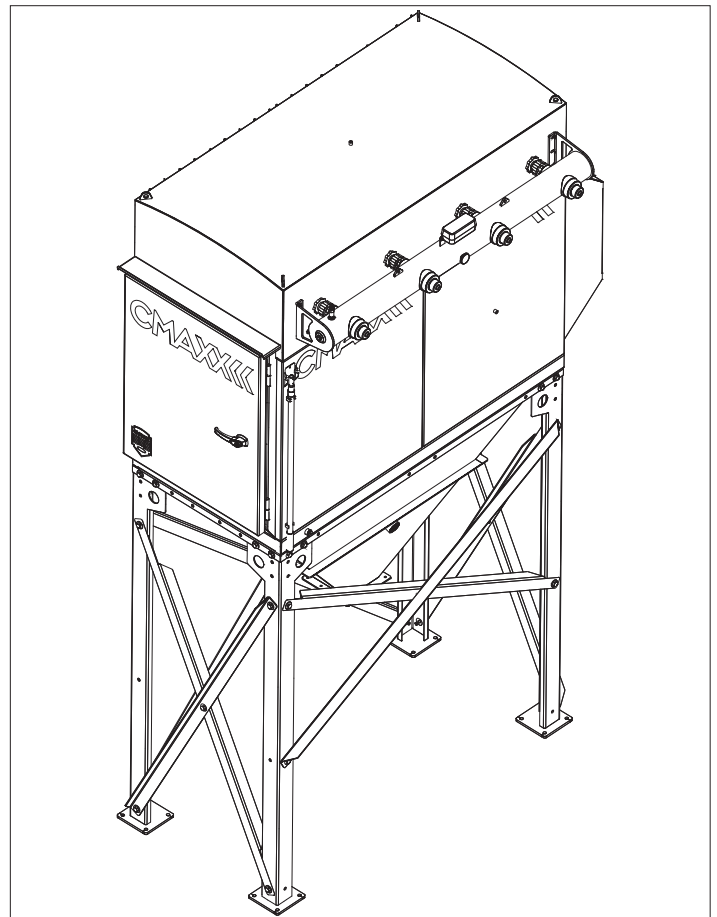


5. Lift the body of the CMAXX onto the hopper using alignment pins to align the hopper flange to the holes in the base flange of the CMAXX.

6. Once all of the bolts are in the base flange and the hoppers are securely bolted to the CMAXX body, tighten all of the hardware connecting the hoppers together, and the support structure.



7. Securely anchor the CMAXX structure to the foundation using the holes in the foot pads.



5.2 COMPRESSED AIR INSTALLATION

- Remove the pipe plug from the end of the air header tank and connect the compressed air supply line. Supply line must be minimum 1 in. diameter. Use pipe sealant or thread sealing tape on all compressed air connections.
- Install a customer supplied regulator with gauge, filter, and automatic condensate valve in the compressed air supply line.

Note: All compressed air components must be sized to meet maximum system requirements per the chart below at 80 PSI. See specification drawing shipped with the unit.

NOTICE

Do not increase supply pressure above 100 PSI. Component damage can result.

- The compressed air supply must be oil and moisture free. Contamination in compressed air used to clean filters will result in poor cleaning, reduced filter life, cleaning valve failure, and poor collector performance.
- Purge compressed air lines to remove debris before connecting to the units compressed air manifold.
- Turn off compressed air supply and bleed lines before performing service or maintenance work.

CMAXX DIAPHRAGM VALVE AIR CONSUMPTION @ 80 PSI

		1" Diaphragm Valve			1.5" Diaphragm Valve		
On Time (msec)		100	150	200	100	150	200
Off Time (sec)	5	31.2	62.4	96.0	33.6	66.0	102.0
	10	15.6	31.2	48.0	16.8	33.0	51.0
	15	10.4	20.8	32.0	11.2	22.0	34.0
	20	7.8	15.6	24.0	8.4	16.5	25.5
	25	6.2	12.5	19.2	6.7	13.2	20.4
	30	5.2	10.4	16.0	5.6	11.0	17.0
	35	4.5	8.9	13.7	4.8	9.4	14.6
	40	3.9	7.8	12.0	4.2	8.3	12.8
	45	3.5	6.9	10.7	3.7	7.3	11.3
	50	3.1	6.2	9.6	3.4	6.6	10.2
	55	2.8	5.7	8.7	3.1	6.0	9.3
	60	2.6	5.2	8	2.8	5.5	8.5

5.3 ELECTRICAL

5.3.1 POWER REQUIREMENTS

The controller has a “universal” power supply that will allow operation on 120 VAC to 240 VAC power lines. The input voltage must be between 85 VAC and 270VAC either 50 or 60 Hz. No circuit changes are required when switching between these voltages. The solenoid loads, however, must be sized to accommodate the line voltage selected.

NOTICE

Do not run control wires, communication cables, or other class 2 wiring in the same conduit as power leads.

The system may malfunction if class 2 wiring is run together with power conductors.

5.3.2 DCT1000 TERMINAL CONNECTIONS

The line and solenoid connections are located at the lower edge of the board below the plastic guard. The terminal block is a “Euro” style connector system that clamps the wire within the connector body. The connector will accept wire sizes from 14 to 22 AWG. The wire should be stripped to no more than 0.25 inches to avoid shorts or expose line voltages creating a potential safety hazard.

To assist you in determining the proper wire gauge required, a strip gauge is provided at the lower right corner of the board. The connector system used on the DCT1000 is specified for single connection but you can piggyback to a single lug provided that local codes allow for this and good workmanship practices are followed.

To power up the master controller and the channel expander, connect line power to L1 and L2 (see Dimensional Specifications, Figure 1).

Connect the solenoids between the selected output and the solenoid common. Solenoid common and L2 are internally connected.

Switches connected to the control inputs at the top of the board must be isolated contacts connected only to the relevant terminal and to the common terminals.

The following subparagraphs describe the external switch connections. Refer to figure 2 for switch connection illustration.

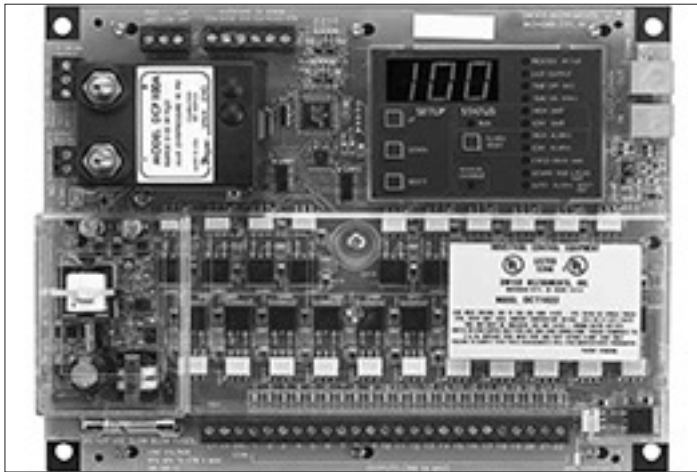
Note: Supply voltage to the timer controller must match the rated voltage of the pilot valve solenoids.

6. DCT1000 CONTROLLER TIMER

The DCT1000 Dust Collector Timer Controller was designed to be used with pulse-jet type dust collectors for on-demand or continuous cleaning applications. Continuous cleaning applications do not require external inputs and can be used for time based “on-demand” cleaning through use of the cycle delay feature.

For on-demand applications, the plug-in pressure modules (DCP100A) can be used to take full advantage of all the features the DCT1000 offers, or an external pressure switch can be used for High/Low limit control.

The Dwyer DCT1000 was designed so that it is easy to use, thus allowing for a quick and easy start up for your dust control applications.



6.1 PROGRAMMING MASTER CONTROLLER

The menu item that you are currently accessing is indicated by the illumination of an LED. To change menu items, push “UP” to increase a value or push “DOWN” to decrease a value. The master controller is equipped with an on board display and programming information center. The controller will power-up with the process indicator illuminated. If a pressure module is installed, the display will indicate the measured pressure in inches of water (w.c.); otherwise it will normally be blank.

6.1.1 LAST OUTPUT

The Last Output Setup selects the last channel to be activated. When first selected, the display will flash the last output available in the system. With single board installations, this will be the number of channels installed, typically 6, 10 or 22. This value becomes

more important when multiple modules are installed. The last out-put value flashed will be the sum of all channels available in the system.

After the last available channel indication has completed, the currently programmed last channel value is displayed. This value maybe changed using the “UP” and “DOWN” buttons. The minimum value is one while the maximum value is the maximum number of installed channels, including all expansion modules. The default value is the maximum number of channels. Pressing “SELECT” will change the setup mode to Time Off Setup.

6.1.2 TIME OFF (SEC)

Time Off Setup defines the period of time between solenoid activations when no channels are enabled. This may be set between one second and 255 seconds. The factory default is 10 seconds. The display will show the current time off setting when the time off setup mode is entered. The value may be changed using the Up and Down buttons. Pressing both “UP” and “DOWN” simultaneously and holding for approximately four seconds will restore the default value of 10.

6.1.3 TIME ON (MSEC)

Time On Setup sets the solenoid on time. The display will indicate the currently programmed time on setting. This is measured in milliseconds. Using the “UP” and “DOWN” buttons, the value may be changed. The value may be set between 10 msec and 600 msec in 10 msec increments. Pressing the “UP” and “DOWN” buttons simultaneously for approximately four seconds will restore the factory default value of 100 msec. Pressing the “SELECT” button will advance the setup mode to the High Limit setup if the pressure module is installed. With no pressure module, it will step to Cycle Delay Setup.

6.1.4 HIGH LIMIT (ONLY WITH DCP CONNECTED)

The High Limit Setup, available only with a pressure module installed, sets the pressure at which the cleaning cycle will begin. This value may be between zero and the pressure module full scale pressure. Normally, the High Limit should be above the Low Limit. If, however, the High Limit pressure is set below the Low Limit, the cleaning cycle will begin when the High Limit is exceeded and stop when the pressure falls below the High Limit. The Low Limit in this case will have no effect. Pressing “SELECT” will change the system to the Low Limit Setup mode.

6.1.5 LOW LIMIT (ONLY WITH DCP INSTALLED)

The operation of the Low Limit, available only with a pressure module installed, is identical to the High Limit except this value sets the pressure where the cleaning cycle will end. The upper setable value is the calibration pressure of the pressure module and the lower limit is zero. Pressing "SELECT" will change the system to the High Alarm Setup mode.

6.1.6 HIGH ALARM (ONLY WITH DCP INSTALLED)

The operation of the High Alarm Setup is identical to the High and Low Limit Setup and is only available when a pressure module is installed. The High Alarm default is 0. The upper setable value is the full scale pressure of the pressure module and the lower limit is zero. Pressing "SELECT" will change the system to the Low Alarm Setup mode.

6.1.7 LOW ALARM (ONLY WITH DCP INSTALLED)

The operation of the Low Alarm Setup is identical to the High and Low Limit Setup. The Low Alarm default is "0". The upper setable value is the full scale pressure of the pressure module and the lower limit is zero. Pressing "SELECT" will change the system to the Cycle Delay Setup mode.

6.1.8 CYCLE DELAY (MIN)

The cycle delay inserts a delay time between the end of the last channel and the beginning of the first channel. This may be set to between zero and 255 minutes. The factory default is zero. Setting the value to zero will disable the delay. Pressing "SELECT" will change the system to the Down Time Cycles Setup mode.

6.1.9 DOWN TIME CYCLES (MIN)

The Down Time Cycles Setup will select a value between zero and 255 minutes. The factory default is one minute. Selecting zero will disable the operation. When the Down Time Cycles is activated by shorting the down time cycles input to the common terminal, the system will enter a forced cleaning mode for the programmed duration. NOTE: The cycle delay, if one is programmed, will not be inserted in the timing cycle. Pressing "SELECT" will change the system to the Auto Alarm Reset Setup mode, if a pressure module is installed, or to Process when no pressure module is available.

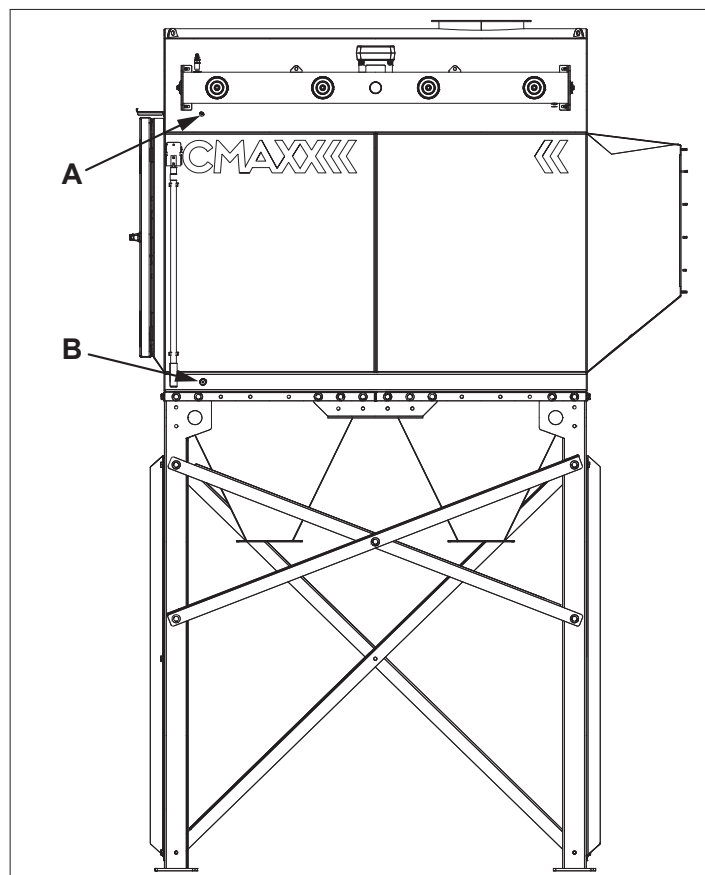
6.1.10 AUTO ALARM RESET (SEC) (ONLY WITH DCP INSTALLED)

The Auto Alarm Reset Setup, available only when a pressure module is installed, allows the auto alarm reset time to be selected. This value may be set between zero and 255 seconds. The factory default value is five seconds. When the auto alarm reset is enabled by shorting the auto alarm reset terminal to a common terminal, the alarm will be reset after the pressure returns to the normal range and the timeout has expired. Pressing "SELECT" will change the system to Process mode.

6.2 MAINTENANCE SUPPORT AND DIAGNOSTICS

We have also included a number of features that will aid maintenance personnel in diagnosing problems or verifying that the system is operating.

6.3 PRESSURE PORT LOCATION



A. Low Pressure Port
B. High Pressure Port

7. STARTUP

1. Check all hardware to make sure it is tight, and all duct connections are sealed properly.
2. Check that filters are installed properly and that all lift rails are in up position.
3. Check that compressed air is on and regulated to 80 PSI (Recommend using a minimum of 1 in. diameter pipe to plumb the compressed air to the CMAXX).
4. Check that timer controller is on and properly programmed. See section 6 for programming instructions. The following settings work well in most applications.
 - Last output: This number needs to match number of diaphragm valves on CMAXX.
 - Time Off: 10 Seconds.
 - Time On: 150 Milliseconds.
 - High Limit: 3.0 INWC.
 - Low Limit: 1.5 INWC.
 - High Alarm: 6.0 INWC.
 - Low Alarm: 0.0 INWC.
 - Cycle Delay: 0 Minutes.
 - Down Time Cycles: 5 Minutes.
 - Auto Alarm Reset: 5 Seconds.
5. Set timer controller to continuous and verify that diaphragm valves pulse properly. You should hear a short pulse of air every 10 seconds in the dust collector.
6. Set timer controller to on demand for normal operation.
7. Verify that pressure ports on body of CMAXX are plumbed to timer controller.
8. If using a drum kit with slide gate, make sure slide gate is open and drum is connected and sealed. Hopper on CMAXX is not intended to store material in it.
9. Set fan outlet damper to 75% open.
10. Bump start fan and verify wheel is rotating in proper direction.
11. Start fan and allow to reach full operating speed. Check AMP draw. Fan should be operating below full load amp rating on motor name plate. If operating above full load amps, gradually close fan outlet damper until amps drop below full load amps value.
12. It is recommended that air readings are taken at startup and the fan outlet damper adjusted to match rated CFM of your dust collector. A dust collector operating above the design CFM will experience reduced filter life.

13. Imperial Systems, Inc. does offer a system startup service. Please contact your sales representative for current pricing for this service.

NOTICE

Operating dust collector above the design CFM will reduce filter life.

8. MAINTENANCE

8.1 FILTER HANDLING AND REPLACEMENT

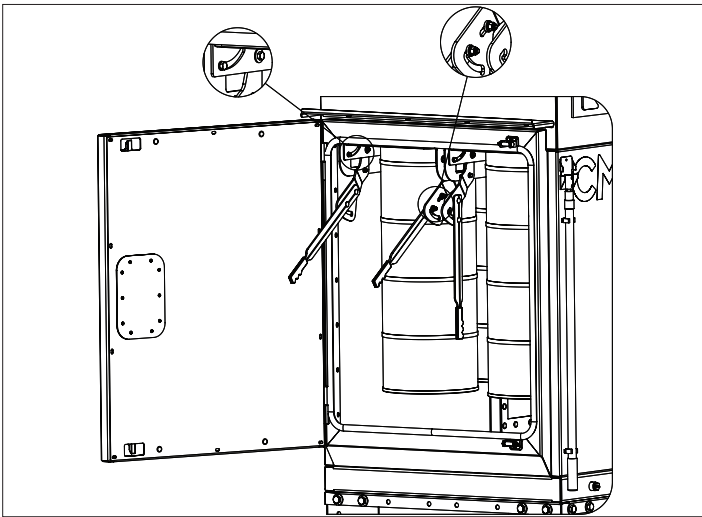
NOTICE

Improper handling of a filter can ruin the filter.

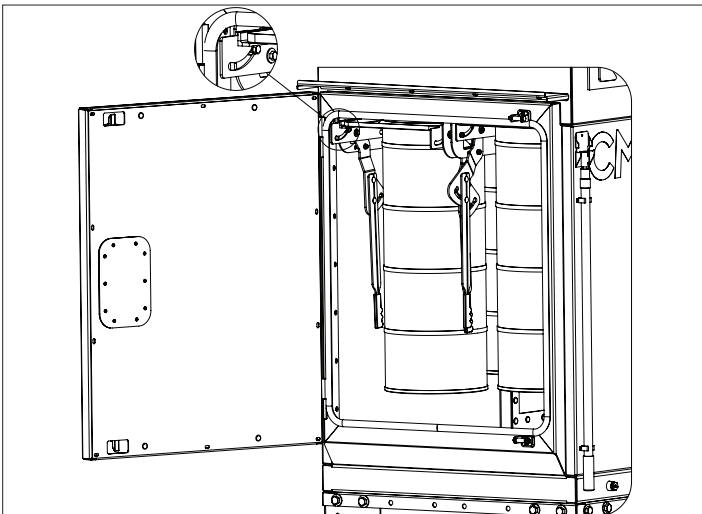
Filter Handling: Only handle filters by the top and/or bottom steel pan. Handling paper media can result in tearing the filter media, resulting in dust leaking through the media.

Filter Removal:

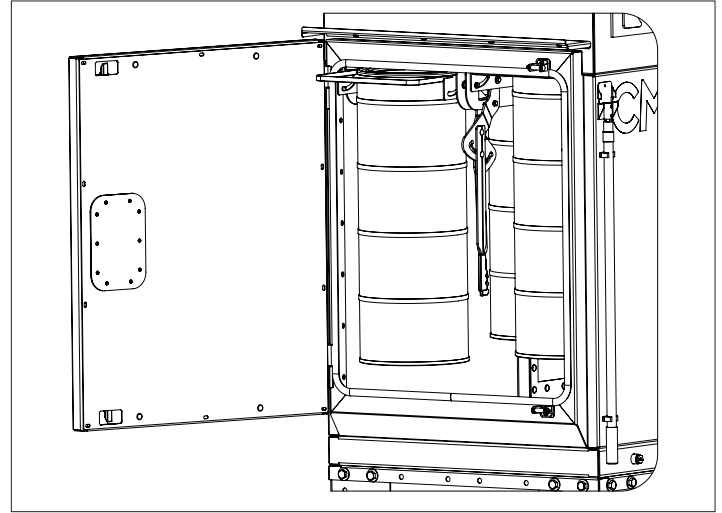
1. Lift cam lever and lock lever in extended position.



2. Using lever in extended position lower filter lift rail assembly. Repeat this on both sides of filter.



3. Once both lift rails are lowered, filter can then be removed from unit by pulling filter out by top pan. Handling filter by paper filter media can permanently damage filter.



4. Once all filters are removed from the row, new ones can be reinserted using the opposite procedure.

8.2 SAFETY VALVE MAINTENANCE

If a valve is discovered to be leaking it can be cleared by manually operating the valve to a pressure that will cause it to operate. Please note that valves with metal-to-metal seats are not absolutely “bubble tight” and they will allow a pressure loss over a period of time. If a valve has a leak it should be replaced, as leaks are self-propagating.

Safety relief valves must be inspected and tested for operation periodically. It is the users responsibility to determine the frequency of inspection as he is the only party familiar with the operating conditions and the relative hazards of an inoperative valve. It is recommended that at the very least each valve should be inspected semi-annually. Local ordinances may require more frequent inspection. Testing should be done by operating the valve either through the use of the operating device on the valve or if it doesn't have an operating device it should be connected to a source of pressure that will cause it to operate.

Valves that are capacity certified by the ASME are factory sealed. Tampering, altering, or adjustment of these valves voids any warranty and liability of the manufacturer. Repairs or resetting will be made only by the factory. Please contact the factory prior to returning any valve for service and securely package valves for shipping.

8.3 CMAXX SPARE PARTS

CMAXX SPARE PARTS	
PART #	DESCRIPTION
CMAXX Cartridges	
Spun-Bond Cartridges	
PART #	Description
460010.006	225 sq. ft. Spun-Bond Polyester
460010.017	225 sq. ft. Spun-Bond Aluminized Finish (Static Drain)
460011	225 sq. ft. Spun-Bond Oleophobic Treatment
460018.018	225 sq. ft. Spun-Bond with PTFE Membrane
460013	185 sq. ft. Spun-Bond Polyester (250° F)
460014	185 sq. ft. Spun-Bond Aluminized Spun-Bond Polyester (250°F)
460015	185 sq. ft. Spun-Bond Oleophobic Treatment (250°F)
460016	185 sq. ft. Spun-Bond with PTFE Membrane (250°F)
DeltaMAXX Filter Cartridges	
PART #	Description
460010.013	350 sq. ft. Nanofiber Filter
460010.002	350 sq. ft. Fire Retardant Nanofiber Filter
DM350IDA-FR	350 sq. ft. IDA certified construction Fire Retardant Nanofiber Filter
460010.014	350 sq. ft. Carbon Impregnated Nanofiber Filter
After Filters	
PART #	Description
PF24X24X2	30/30 Pre-Filter, 24x24x2
PF12X24X2	30/30 Pre-Filter, 12x24x2
PF24X24X2CL2	30/30 Pre-Filter, 24x24x4 CL2
PF24x24x12HEPA	2000 HEPA Filter, 24x24x12
PF12X24X12HEPA	2000 HEPA Filter, 12x24x12
After Filter Gauge & Pneumatics	
PART #	Description
MAGGAUGE2010	Magnahelic Gauge, 0-10"
MAGGAUGEMOUNT-A369	Gauge Mount
PNEU-AIRTUBING	1/4" Black Poly Tubing 100' Roll
PNEU-FIT25T12MNPT-90	Male Pipe 90° Elbow, 1/8"NPT x 1/4"Tubing
PNEU-FIT25T12MNPTSTR	Male Pipe Adapter, 1/8"NPT x 1/4"Tubing
Overbags	
PART #	Description
460022	Nylon Overbag For DeltaMAXX Cartridge
Complete Timer Controller	
PART #	Description
430042	6 Channel Timer Control Nema 4X w/DP Module
430042.001	10 Channel Timer Control Nema 4X w/DP Module
430042.002	22 Channel Timer Control Nema 4X w/DP Module

CMAXX SPARE PARTS

PART # DESCRIPTION

Replacement Boards only

PART #	Description
TIMERBOARD-006	Timer Board 6 channel
TIMERBOARD-010	Timer Board 10 channel
TIMERBOARD-022	Timer Board 22 channel
PRESSUREMODULE-100A	DP Module DCP100 10" w.g.

HARDWARE

Dust Discharge Devices

PART #	Description
RS-FILTER-GAUGE	Pressure gauge Filter
RS-DRUMKIT	Positive Pressure Drum Kit With Manual Slide gate
RS-BARREL-55 GAL	55-Gallon Drum
RS-BARRELLIDS-55 GAL	Drum Cover Lid with 10" Opening
RS-HOSECLAMP087-107	Hose Clamp for 10" Flex Hose
DCT-FLEX10LDCLR	Flex Hose LD - 10" - Per foot
SLG-MAN-CMAXX	Manual Slide Gate
RS-BARREL-LOCK	Drum Ring/Lever Lock

Diaphragm Valves

PART #	Description
CM01MM-VALVE	1" Manifold Mount Diaphragm Valve
430035.002	1-1/2" Manifold Mount Diaphragm Valve
CM01MM-VALVE-REPAIR	Repair Kit, 1" Diaphragm Valve Nitrile
CM01MM-VALVE-REPAIR-VT	Repair Kit, 1" Diaphragm Valve Viton
CM0150MM-VALVE-REPAIR	Repair Kit, 1-1/2" Diaphragm Valve Nitrile
CM0150MM-VALVE-REPAIR-VT	Repair Kit, 1-1/2" Diaphragm Valve Viton

Pilot Valve Parts

PART #	Description
RS-PILOT REPAIR-NT	Nitrile Replacement Seal, Armeture, Spring & Ferrule Kit
RS-PILOT REPAIR-VT	Viton Replacement Seal, Armeture, Spring & Ferrule Kit

Dust Collector Hardware

PART #	Description
RS-ROPE CAULK	Rope Caulk (100' Roll)
490002	Imperial CMAXX Grey Touch-Up Paint (1 quart)
	Imperial Blue header tank touch up paint (1 quart)
RS-CMAXX-FILTER-TOOL	Cartridge Removal Tool 3 deep
	Cartridge Removal Tool 4 deep
	Cartridge Removal Tool 6 deep

Explosion Vents

PART #	Description
430023	Explosion Vent 11 SF
SPRINKLER-VERT-MNT	Sprinkler Vertical Mounted 215°F
	Sprinkler Side Wall Mounted 215°F

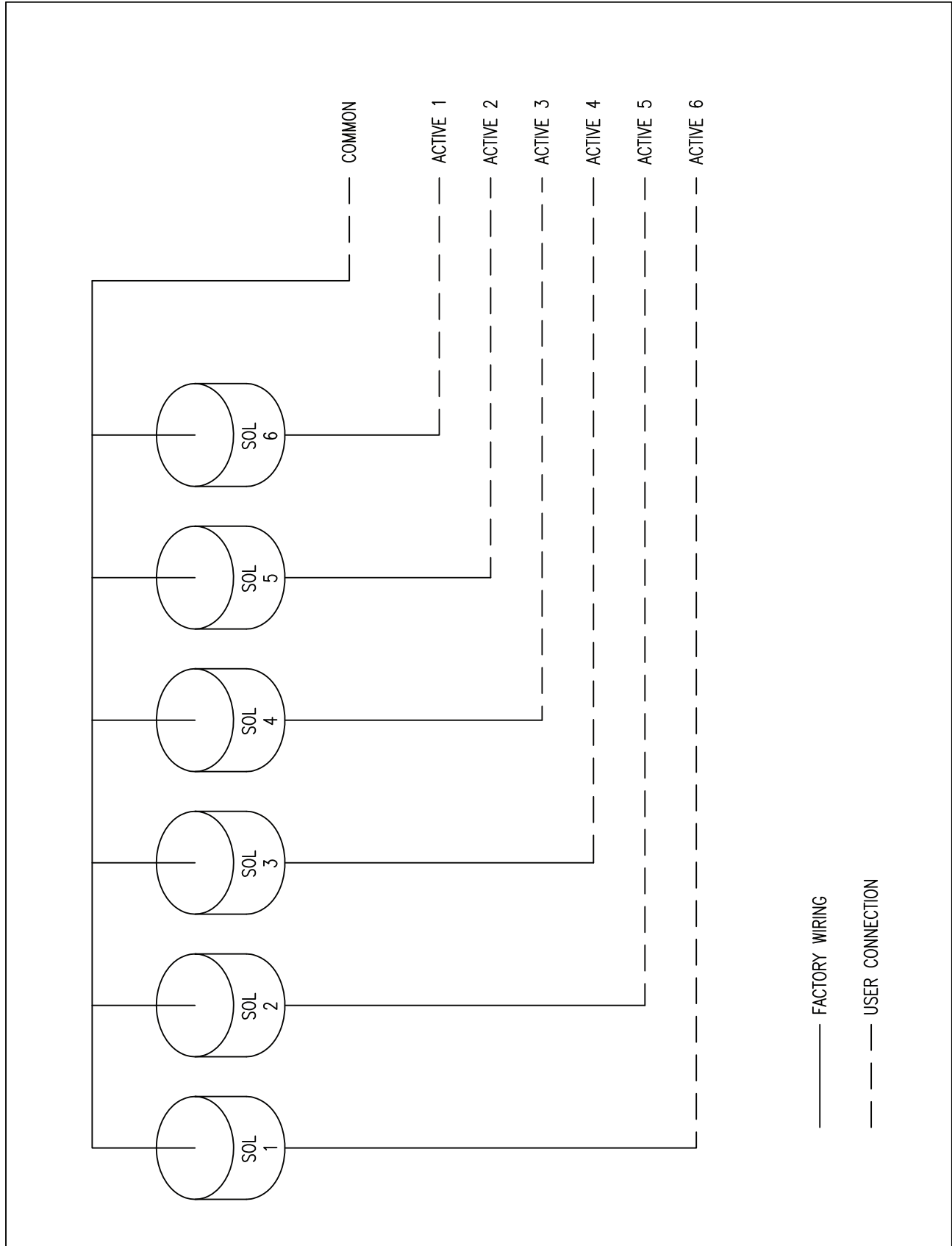
9. TROUBLESHOOTING

PROBLEM	PROBABLE CAUSE	SOLUTION
Blower fan motor does not start.	Improper motor wire size.	Rewire using the correct wire gauges as specified by national and local codes.
	Motor not wired properly.	See motor manufacturers wiring diagram. Check and correct motor wiring for the supply voltage present. Follow wiring diagram and the National Electric Code.
	Motor not wired for available voltage.	Correct the wiring for the supply voltage.
	Input circuit down.	Check power supply to motor circuit on all leads.
	Electrical supply circuit down	Check the power supply circuit for proper voltage. Check for any fuse or circuit breaker fault. Replace as necessary.
Blower fan motor starts, but does not stay running.	Incorrect motor-starter installed.	Check for the proper motor starter and replace if necessary.
	Blower fan damper control not adjusted properly.	Check airflow in duct. Adjust damper control until proper airflow is achieved and the blower motor's amp draw is within the manufacturers rated amps.
	Electrical circuit overload.	Check that supply power circuit has sufficient power to run all the equipment.
Clean air outlet discharging dust.	Filter cartridges not installed properly.	See filter installation.
	Filter cartridge damage, dents in the end caps, gasket damage or holes in pleated media.	Replace filters as necessary. Use only genuine Imperial Delta Maxx replacement filters.
Insufficient airflow.	Fan rotation backwards.	Compare rotation to the blower manufacturers rotation arrow.
	Access doors open or not closed tight.	Check that all access doors are in place and secured. Check that the hopper discharge opening is sealed and the optional attachments are installed correctly.
	Exhaust fan exhaust area restricted.	Check fan exhaust area for obstructions remove material or debris. Adjust fan outlet damper, if equipped.
	Filter cartridges need replacement.	Replace filters as necessary. Use only genuine Imperial Delta Maxx replacement filters.
	Lack of Compressed air.	Check that a minimum of 75-psig is available See compressed air installation.
	Pulse cleaning not energized.	Use a voltmeter to check supply voltage to the timer board. Check and replace the fuse on the timer board if necessary.
	Dust storage area overfilled or plugged.	Clean out dust storage area.
	Pulse valves leaking compressed air.	Lock out all electrical power to the unit and bleed the compressed air supply. Check for debris, valve wear, or diaphragm failure by removing the diaphragm cover on the pulse valves. Check for solenoid leaks or damage. Check for leaks in the tubing from the pulse valve to the solenoid valves. Replace as necessary.
	Solid state timer failure.	Using a voltmeter, check supply voltage to the timer board. Check and replace the fuse on the timer board if necessary. If the fuse is good and input power is present, but output voltage to the solenoid valves is not, replace the timer board.

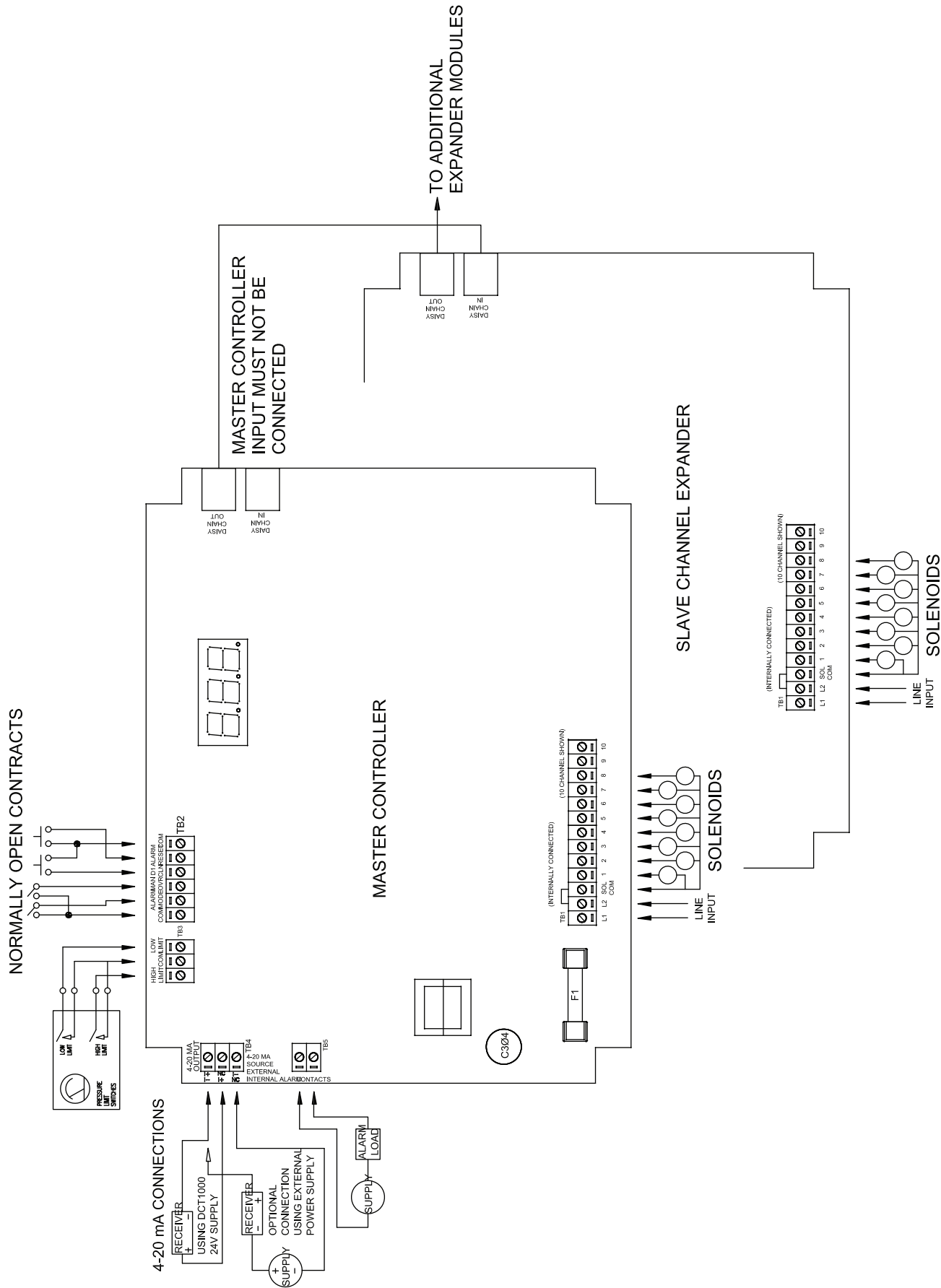
PROBLEM	PROBABLE CAUSE	SOLUTION
Insufficient airflow.	Display on Delta P doesn't return to zero when at rest.	Recalibrate DCP pressure module with pressure tubing attached as described in timer controller installation.
On Demand pressure cleaning does not start.	High setpoint not adjusted for system conditions.	Check tubing for kinks, breaks, contamination, or loose connections.
	Pressure tubing disconnected or plugged.	Remove jumper wire on solid state timer board bypass terminal.
Pulse Cleaning never stops.	Bypass terminals on the timer board jumpered.	Remove jumper wire on solid state timer board bypass terminal.
	High or low setpoint not adjusted for system conditions.	Adjust setpoints to current conditions.
	Pressure tubing disconnected or plugged.	Check tubing for kinks, breaks, contamination, or loose connections.
Alarm light is ON.	Alarm setpoint too low.	Adjust to a higher value.
	Excess pressure drop.	Check cleaning system and compressed air supply. Replace filter cartridges if filters do not clean down.
	Pressure tubing disconnected or plugged.	Check tubing for kinks, breaks, contamination, or loose connections.
Cleaning output lights flash but system is not functioning.	Improper wiring.	Check wiring between the timer control board and the solenoid valve coils.
	Defective solenoids.	Check all solenoid coils for proper operation.
	Timer board not powered.	Check power on light on timer board's LED display. If not illuminated, check the fuse on the timer board. Replace as necessary.
	Timer board defective.	If LED is illuminated, observe the output display. Install a temporary jumper across the man override terminal to the COM terminal. Output LED's should flash in sequence. Check output using a multimeter measure from SOL COM to a solenoid output. The needle will deflect when the LED flashes for that output if voltage is present at output terminals during flash, replace board if necessary.

10. ELECTRICAL

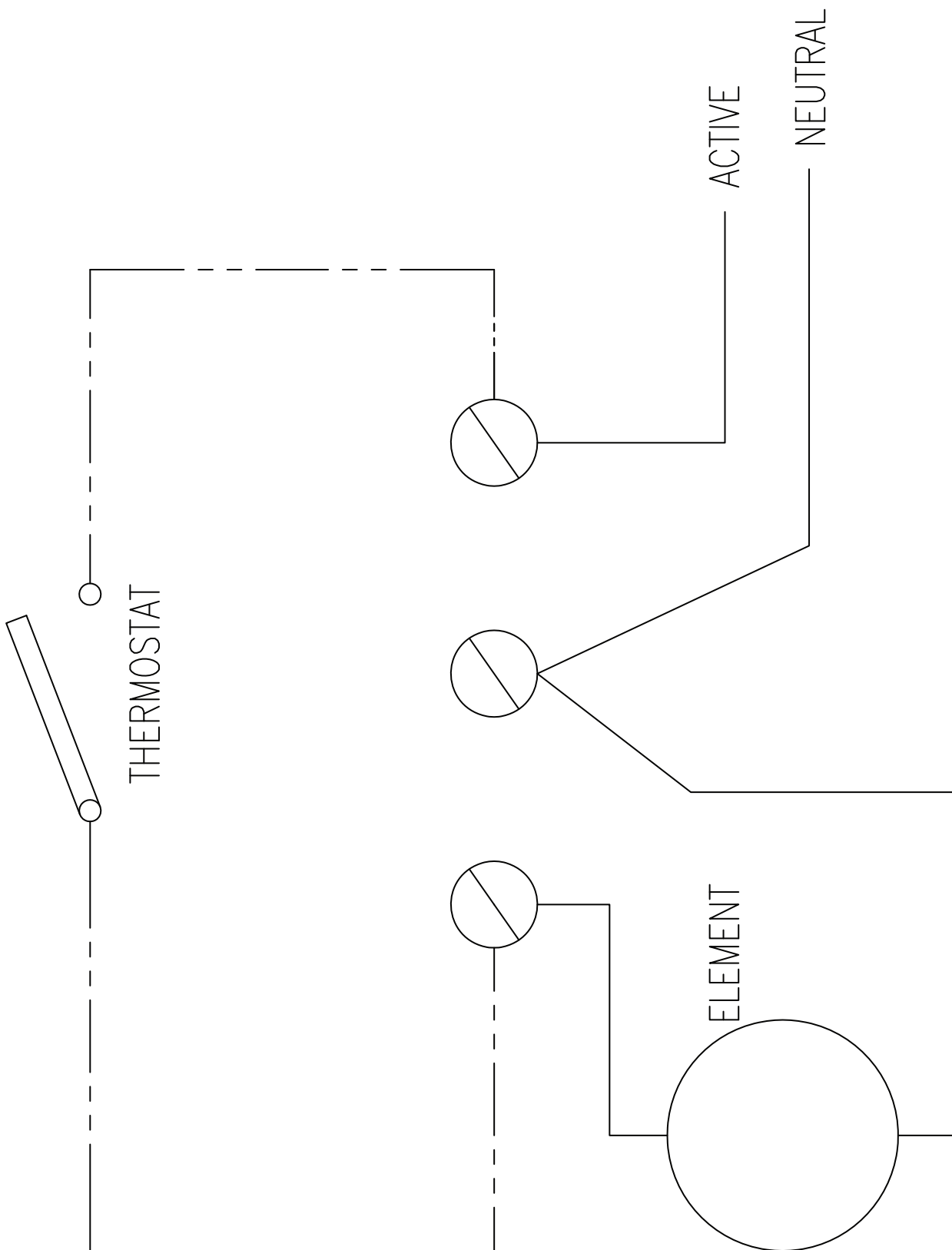
10.1 SOLENOID SCHEMATIC



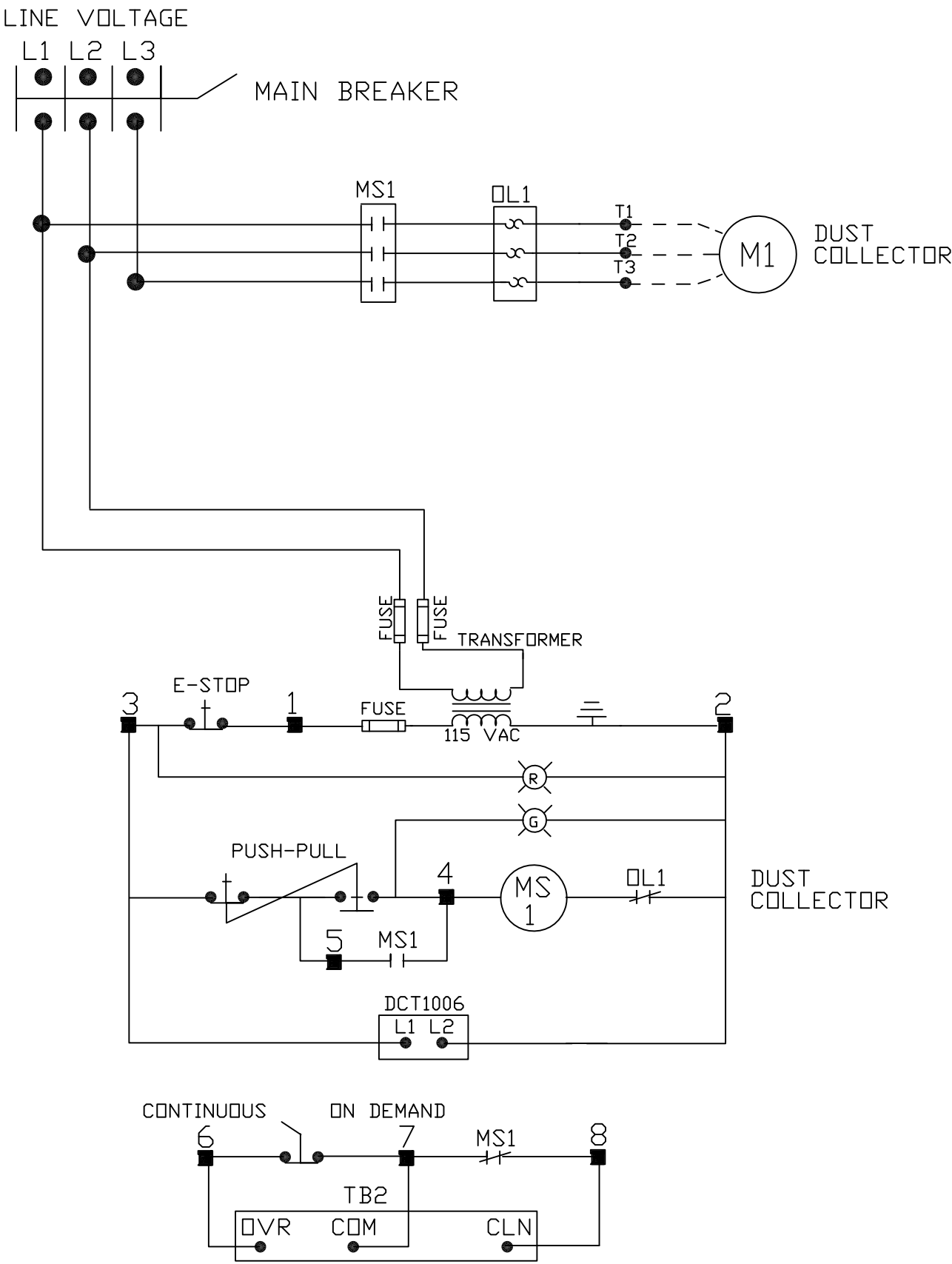
10.2 DCT1000 SCHEMATIC



10.3 SOLENOID HEATER SCHEMATIC (OPTIONAL)



10.4 INTEGRATED CONTROLS WIRING DIAGRAM





Imperial Systems, Inc.
300 Imperial Drive
Jackson Center, PA 16133
Phone: 724-662-2801
Fax: 724-662-2803
www.isystemsweb.com